

Lithium Battery Solar Charge Controller with built-in LED Driver

Tracer BPL series



The Tracer BPL series lithium battery MPPT solar charge controller combines solar charge controller and LED constant current driver into one unit which is ideal for solar LED Lighting, especially when dimmer function is needed. The advanced Maximum Power Point Tracking charging methods enables the system charging and discharging management to obtain the most radical optimization. Increase the system flexibility, yet lower down the system cost.

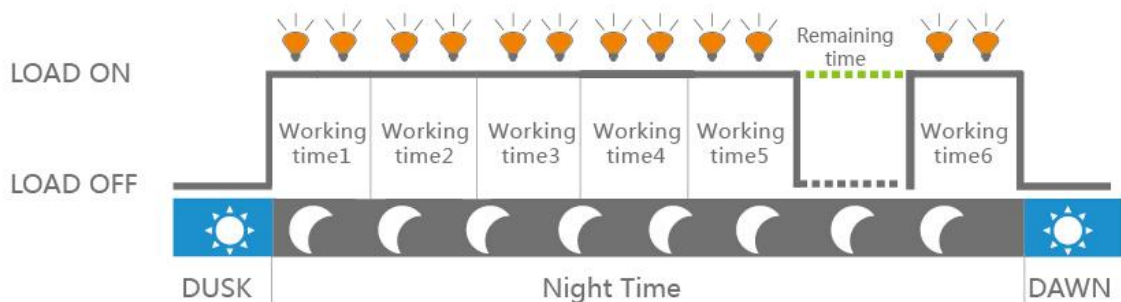
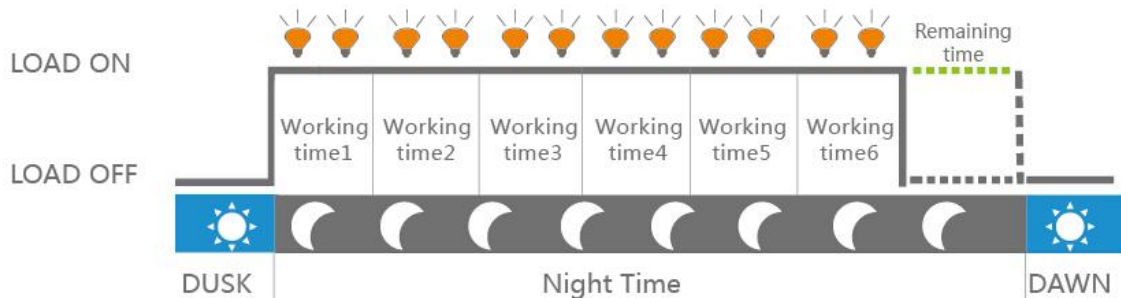
Models:

| | | |
|-------------------------------|------------------|-----|
| Tracer2606BPL / Tracer2610BPL | 12/24V auto work | 10A |
| Tracer3906BPL / Tracer3910BPL | 12/24V auto work | 15A |
| Tracer5206BPL / Tracer5210BPL | 12/24V auto work | 20A |

Features:

- Adopt high quality components of ST,IR and Infineon, make sure product using lifespan
- Wide working environment temperature(-40°C ~ 60°C)
- Apply to lithium battery(LiFePO4/Li-NiCoMn)and battery(Sealed/Gel/Flooded)
- Lithium battery self-activating and low temperature protection function
- Maximum conversion efficiency of 98%
- Advanced Maximum Power Point Tracking (MPPT) technology, with tracking efficiency no less than 99.5%
- Ultra-fast tracking speed and guaranteed tracking efficiency
- Accurately recognizing and tracking of multiple power points
- Digital precision constant current control and the control accuracy are less than $\pm 2\%$

- Load reduce power automatically
- Maximum output efficiency of 96%
- PV and Load power limitation function
- The output current can be adjusted among the rated power and current range
- Monitoring and setting parameter via Mobile APP, PC Monitor setting software with RS485 communication interface.
- Use of standard Modbus communication protocol for RS485 bus connections, communication protocol compatibility much better
- Connecting the IOT(Internet of Things) module and Cloud Server monitoring software to realize remote monitoring of the multi-machine system
- The RS485 connector can provide power supply
- Aluminum housing for better cooling
- Real-time energy statistics function
- IP67 waterproof degree
- Long lifespan design , five years warranty



Load working mode:

- Manual Mode
- Light ON/OFF(Default)
- Light ON + Timer
- Real-time Control
- Intelligent Power Mode

Electronic protections:

- PV reverse polarity protection
- Battery over Voltage protection
- Battery overheating protection
- Lithium battery low temperature protection
- Battery reverse polarity protection
- Battery over discharge protection
- Load short circuit protection



Optional accessories:



Wireless collector eBox-WL433M-01
Realize remote monitoring of the multi-machine system



Super parameter programmer SPP-02
For bulk quantity products setting



CC-USB-RS485-150U-22AWG
PC communication cable(1.5m)

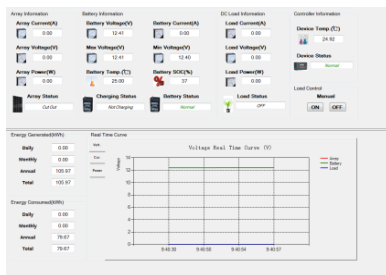


OTG-12CM
OTG cable(12cm)

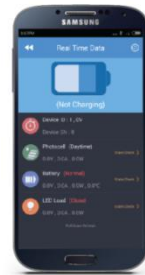


Fixed plate (Four)

PC software:



Mobile APP:



* Free download from website for PC software and APP.

Technical specifications

| Model | Tracer2606BPL | Tracer3906BPL | Tracer5206BPL |
|---------------------------------|---|----------------------|----------------------|
| | Tracer2610BPL | Tracer3910BPL | Tracer5210BPL |
| Nominal system voltage | 12/24VDC Auto (Lithium battery no rated voltage level) | | |
| Rated charge current | 10A | 15A | 20A |
| Rated charge power | 130W/12V 260W/24V | 195W/12V 390W/24V | 260W/12V 520W/24V |
| Max. PV open circuit voltage | Tracer**06BPL: 60V at minimum operating environment temperature 46V at 25°C environment temperature Tracer**10BPL: 100V at minimum operating environment temperature 92V at 25°C environment temperature | | |
| MPP Voltage range | Tracer**06BPL: (Battery voltage+2V)~36V Tracer**10BPL: (Battery voltage+2V)~72V | | |
| Max. output current | 3.3A | 4.5A | 6.6A |
| Max. output power | 100W | 130W | 200W |
| Output voltage range | Tracer**06BPL: (Max. battery voltage+2V)~58V Tracer**10BPL: (Max. battery voltage+2V)~80V | | |
| Load open circuit voltage | Tracer**06BPL: 58V, Tracer**10BPL: 80V | | |
| Load over voltage protection | Tracer**06BPL: 63V, Tracer**10BPL: 100V | | |
| Maximum output efficiency | 96% | | |
| Output current control accuracy | ≤2% | | |
| Battery type | Sealed / Gel / Flooded ; LiFePO4 / Li-NiCoMn / User | | |
| Equalize charging voltage* | Sealed:14.6V(12V),29.2V(24V) /Gel: No / Flooded: 14.8V(12V),29.6V(24V); No | | |
| Boost charging voltage* | Sealed :14.4V(12V), 28.8V(24V)/ Gel:14.2V(12V), 28.4V(24V)/ Flooded:14.6V(12V), 29.2V(24V)/ LiFePO4:14.6V/ Li-NiCoMn:12.51V / User:9-34V | | |
| Float charging voltage* | Sealed/Gel/Flooded:13.8V(12V),27.6V(24V) LiFePO4:14.4V / Li-NiCoMn:12.39V / User:9-34V | | |
| Low voltage reconnect voltage* | Sealed/Gel/Flooded:12.6V(12V), 25.2V(24V) LiFePO4:12.0V / Li-NiCoMn:10.8V / User:9-34V | | |
| Low voltage disconnect voltage* | Sealed/Gel/Flooded:11.1V(12V),22.2V(24V) LiFePO4:10.6V / Li-NiCoMn:9.3V / User:9-34V | | |
| Self-consumption | ≤15mA/12V;≤22mA/24V | | |
| Communication | RS485 | | |
| Overall dimension | 124×89×30mm | 150x93.5x32.7mm | 153.3x105x52.1mm |
| Net weight | 0.54kg | 0.73kg | 1.18kg |
| Enclosure | IP67 | | |
| Working environment temperature | -40°C~+60°C | | |

* Programmable voltage value by SPP-02 , PC and APP.



BEIJING EPSOLAR TECHNOLOGY CO.,LTD.

Add: BLDG #18, CO.PARK ,NO.8 HEYING ROAD,CHANGPING DISTRICT, BEIJING, CHINA

Tel: 86-10-82894962 / 82894112

Fax: 86-10-82894882

E-mail: info@epsolarpv.com

ISO9001:2008 ISO14001:2004